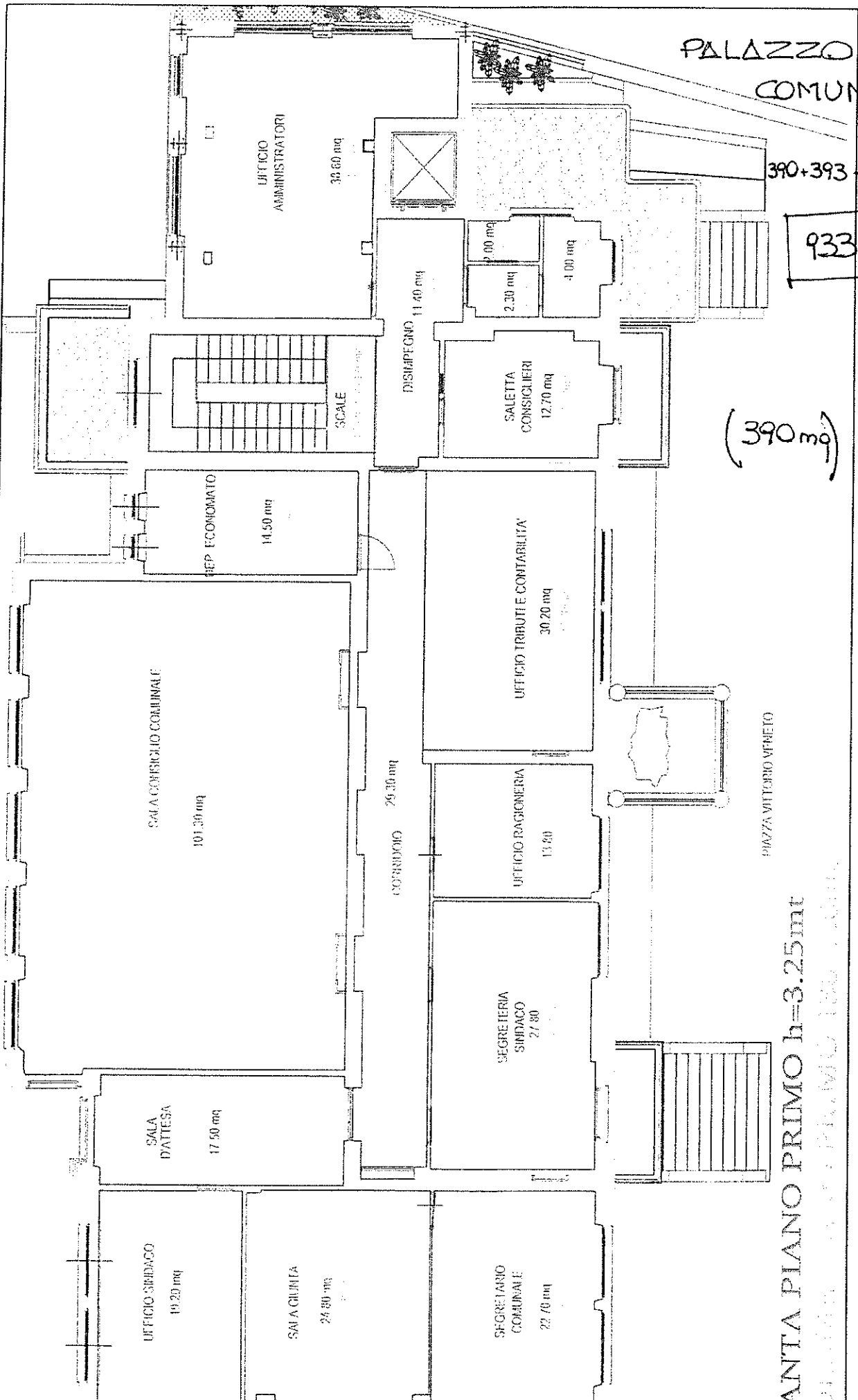


PALAZZO
COMUNALE



390+393+150

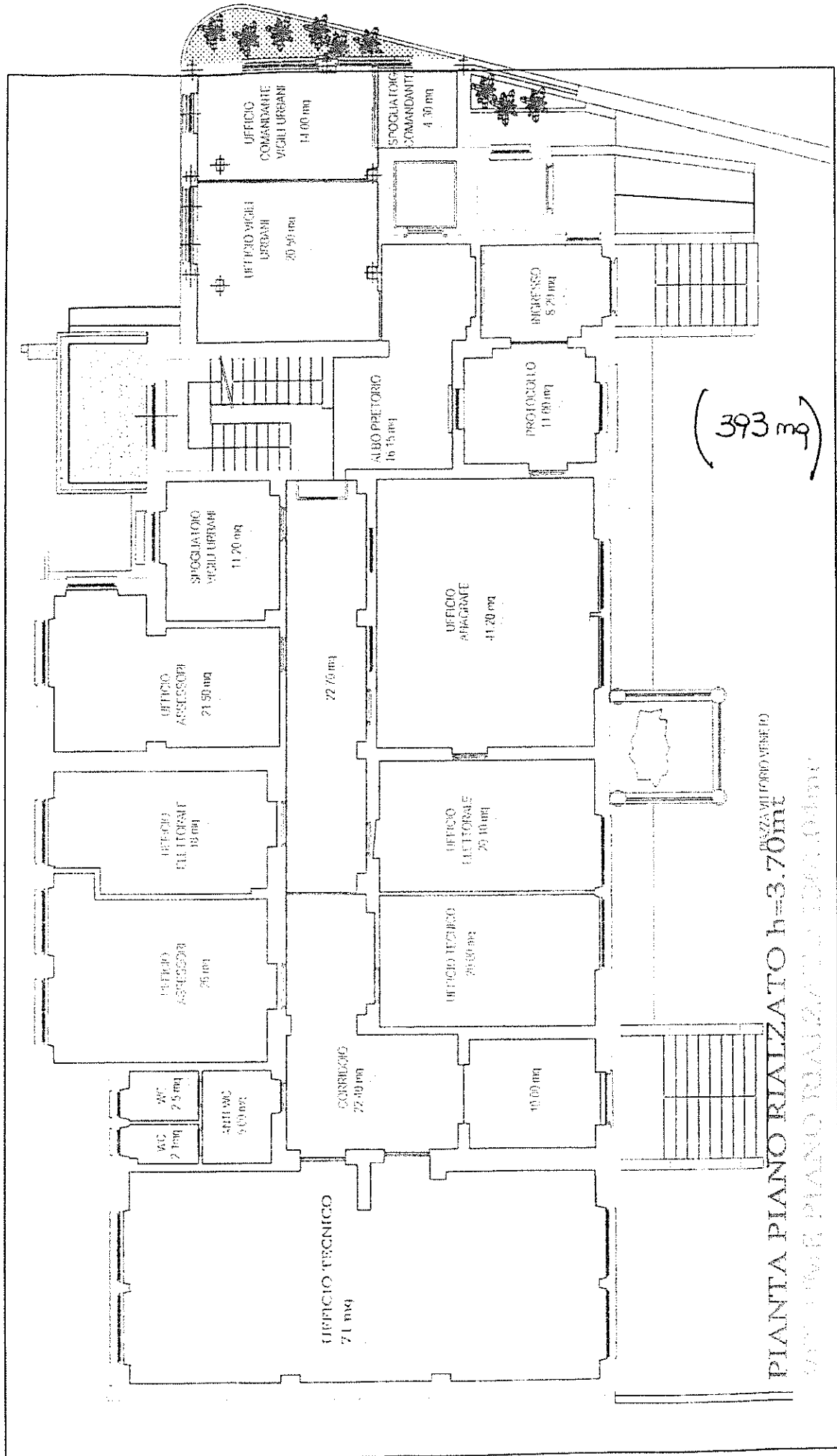
933 mq

(390 mq)

PIAZZA VITTORIO VENETO

PIANTA PIANO PRIMO h=3.25 mt

390 mq + 393 mq + 150 mq = 933 mq

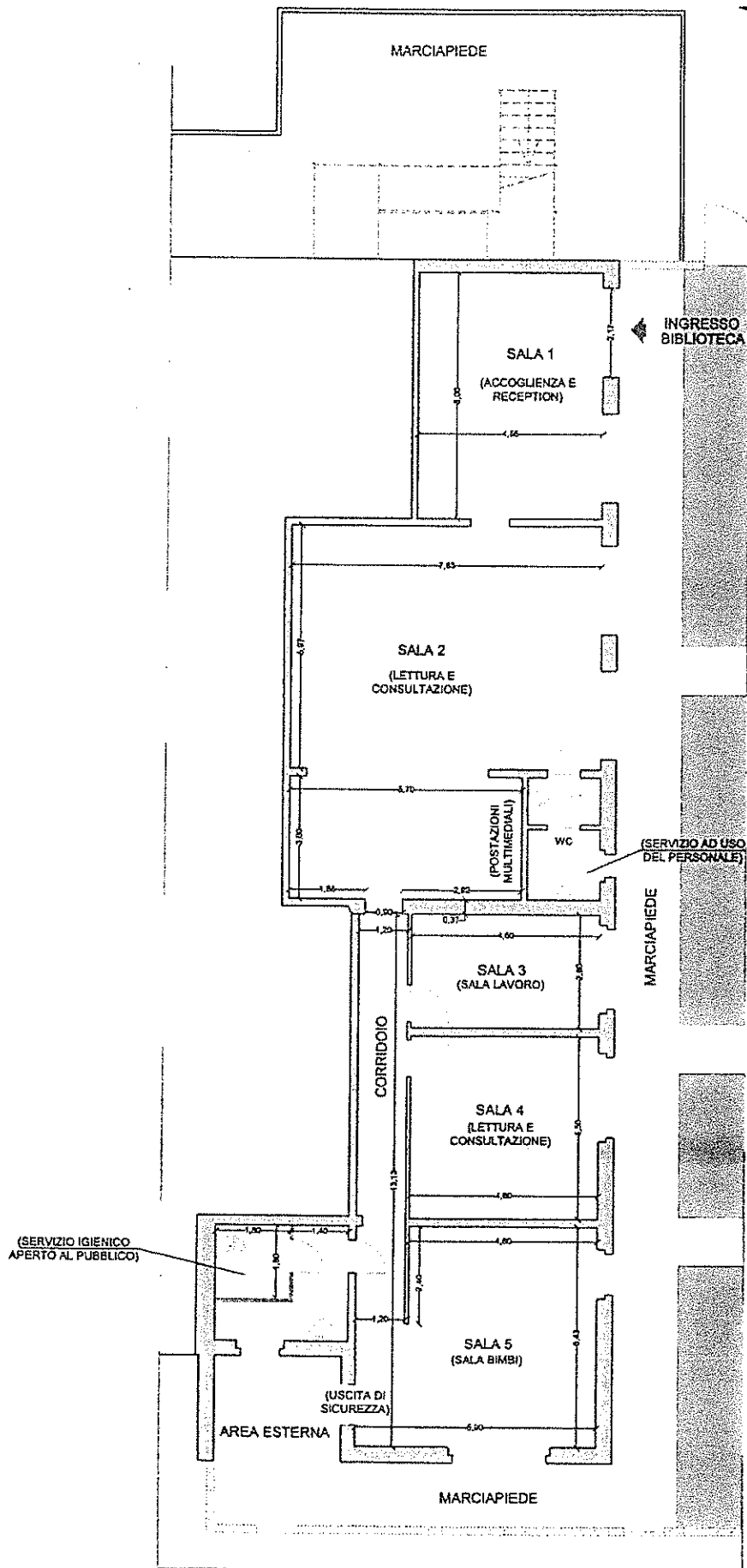


(393 m²)

PIANTA PIANO REALIZZATO h=3.70m
 SPAZZA VILLORETO (MILANO)
 1971-1972 PIANO REALIZZATO h=3.70m

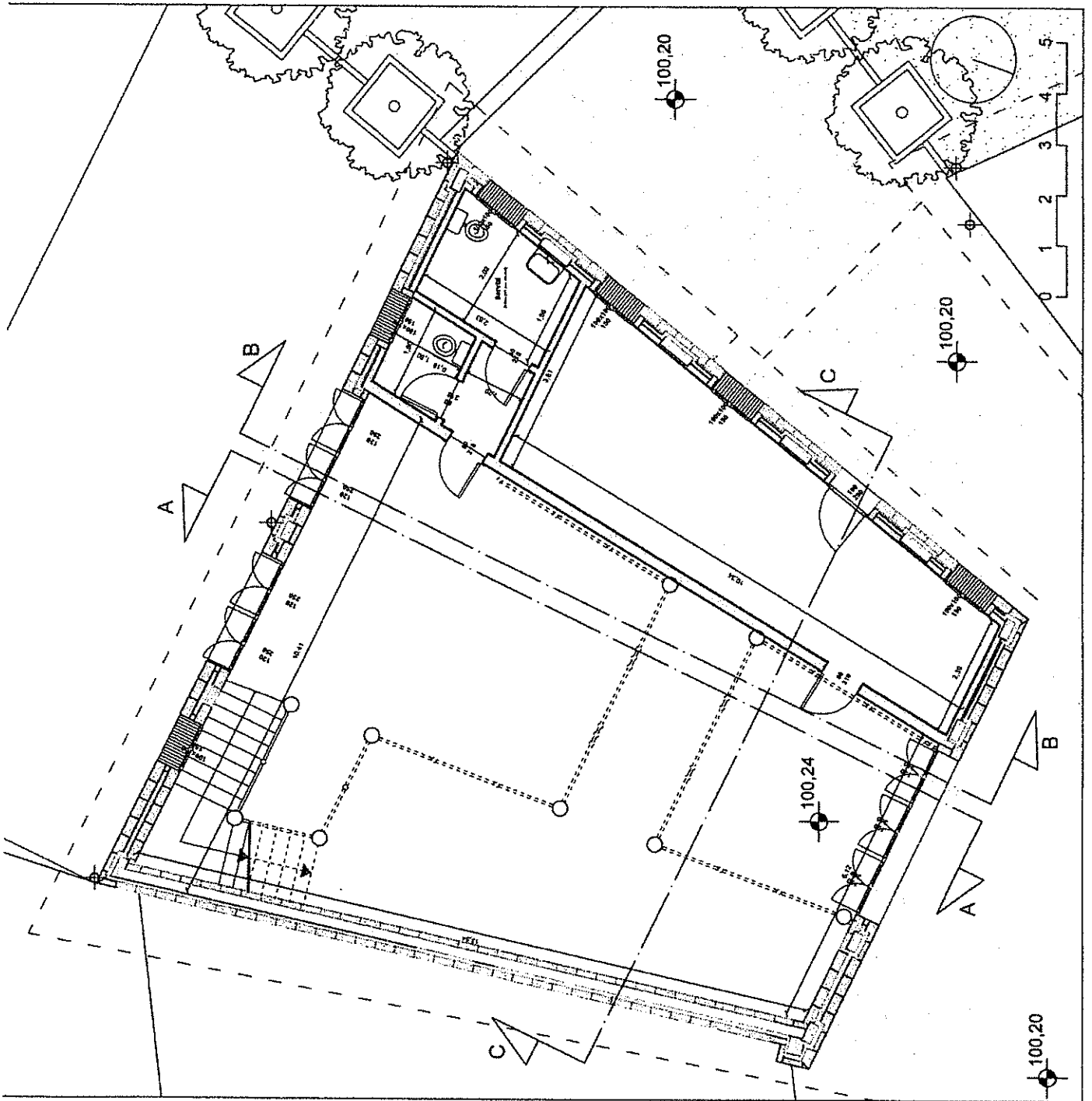
PIANTA

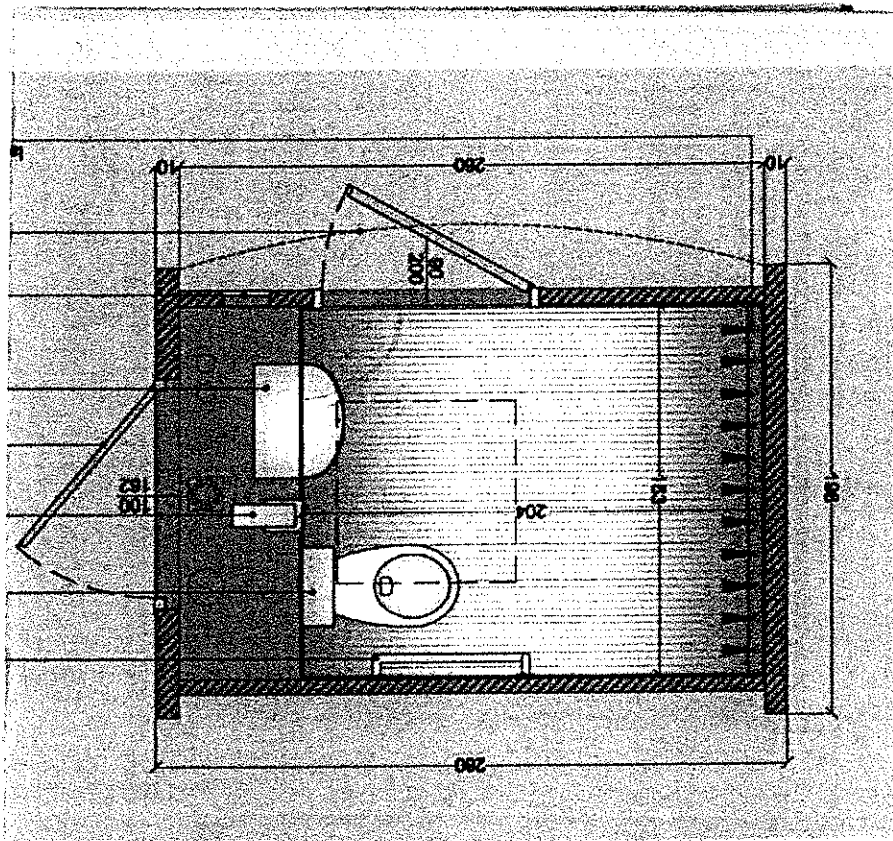
BIBLIOTECA
180 mq



Scala 1:100

CASA ASSOCIAZIONI
1° PIANO = 154,00

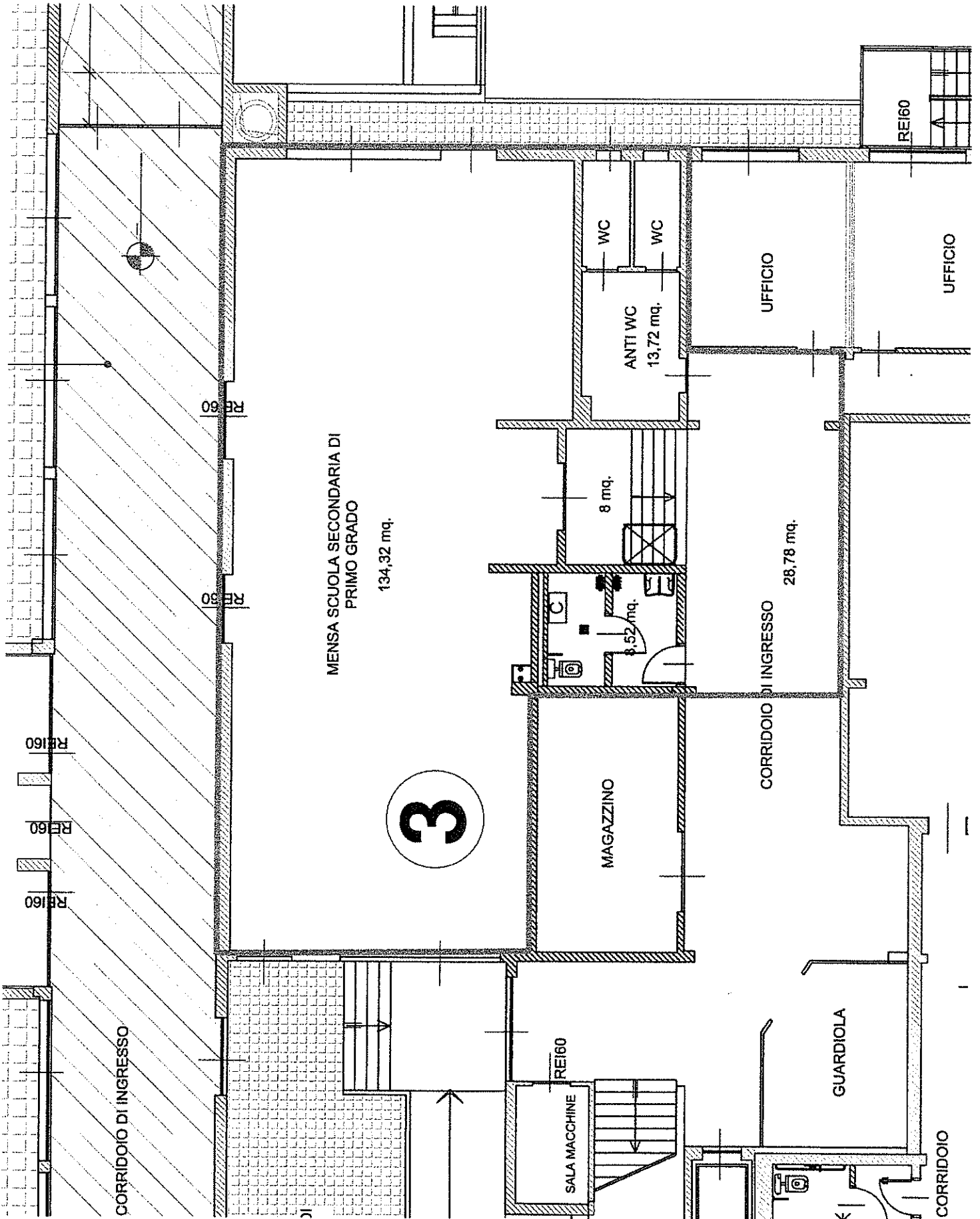




Tot. mq. = 5,50

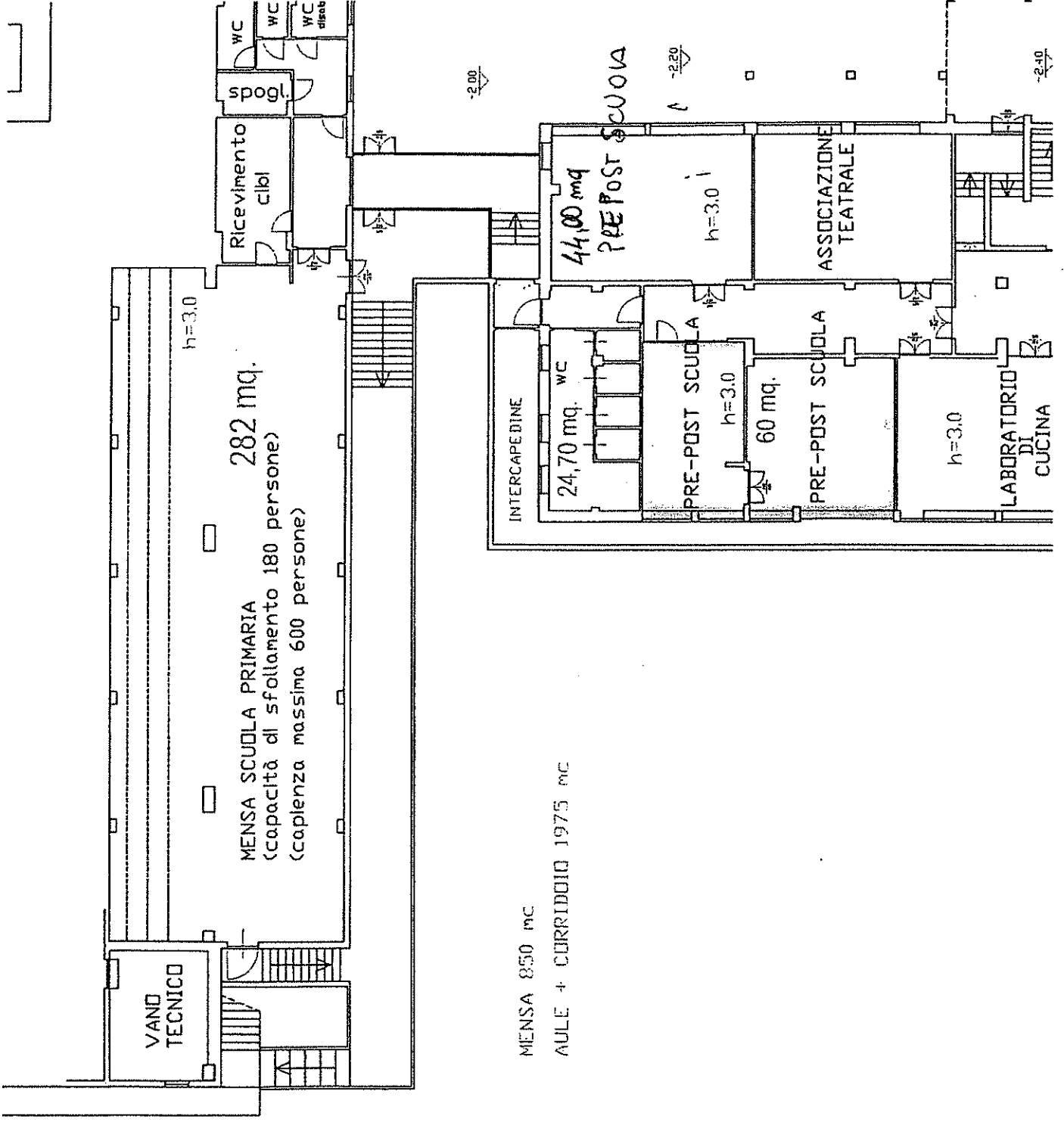
Cemiteo estivo primario

193,34 mq



PRE-POST PRIMARIA

128,70 mq



282 mq.
MENZA SCUOLA PRIMARIA
(capacità di sfollamento 180 persone)
(capienza massima 600 persone)

MENZA 850 mc
AULE + CORRIDOIO 1975 mc

44,00 mq
PRE-POST SCUOLA

60 mq.
PRE-POST SCUOLA

ASSOCIAZIONE
TEATRALE

LABORATORIO
DI
CUCINA

INTERCAPEDINE

24,70 mq. WC

h=3.0

h=3.0

h=3.0

-2.00

-2.20

-2.40

